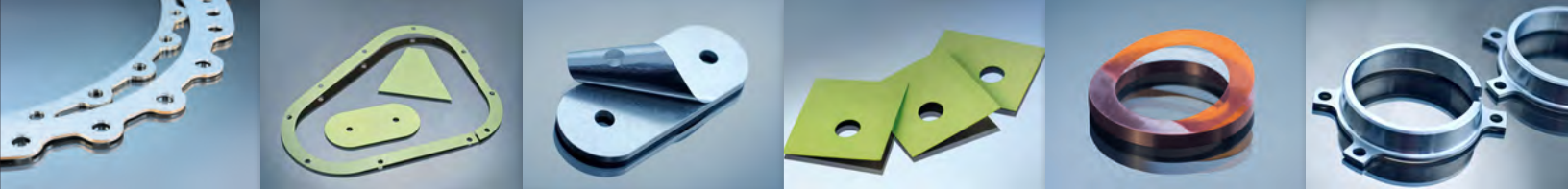




Canada's only full service custom shim manufacturer serving the global aerospace, space, defense and industrial supply chains.



Experience *The Perfect Fit*

At Shimco we strive for excellence by expanding our production, capabilities, streamlining processes, implementing advanced technologies and offering unique custom coatings. We continue to advance key technologies through collaboration with world-class research institutions and industrial partnerships.

**OUR VISION** is to be a preferred strategic partner to global aerospace, space & defense OEMs and tier 1 system integrators, providing value and service on everything that flies.



**Established in 1985, Shimco is the only company of its kind in Canada and one of very few aerospace shim manufacturers in the world.**

#### **Our Product Line**

- Laminated Shims
- Edge Bonded Shims
- Tapered Shims
- Non-Metallic Shims
- Washers and Spacers
- Solid Shims
- Machine formed
- Advanced Coatings

Since its inception, Shimco's product offerings have evolved to focus primarily on aerospace applications. Today, Shimco manufactures several different types of customized products, including solid, laminated, edge bonded, and tapered shims, laminated sheet stock and precision machined parts.

Shimco is committed to delivering products that meet or exceed its customers' expectations by maintaining its exceptional quality and on-time delivery record, offering innovative new products, investing in leading edge manufacturing processes, implementing cost reduction initiatives and maintaining its financial strength. Our customers know that they can count on Shimco to deliver what they need today and that Shimco will be here tomorrow to do the same.

---

**Industry Focus: Aerospace / Defense / Military / Space / Industrial**

*"Shimco is committed to innovative product developments that will benefit customers in the aerospace industry, as well as those in the defense, space and industrial markets."*

Peter Voss, President



As a full-service manufacturing facility, Shimco has the in-house capability of providing material in basic forms, such as laminated sheets and shim stock, but more commonly delivers products to its customers in a production-ready state. Shimco manufactures under ISO 9001 2008: AS 9100D standards, using multi-axis CNC milling machines, CNC and conventional turning lathes, high-tolerance shears and tightly controlled manufacturing processes. Shimco also invests heavily in information technology, ensuring that critical information is captured, securely stored and used effectively in driving lean processes throughout the organization. The end result is that Shimco's partners get the products that they want, when they want it.

### Manufacturing Methods

- CNC Milling and Turning
- Forming
- General Machining
- Shearing

### Sub-Contract

- Laser Cutting
- Surface Grinding
- Water Jet Cutting

### Lengths

Max 42 in / 1066.8 mm

### Widths

Max 20.5 in / 520.7 mm

### Thicknesses

Min 0.001 in / .0254 mm

Max 20.5 in / 520.7 mm

Shimco is ISO 2008:AS9100D certified and Canadian Controlled Goods registered, we operate at a heightened level of quality control and security. Customers have the confidence that whatever products or services they obtain from Shimco will be at world-class levels and that their information will always be protected.

Experience *The Perfect Fit*

In partnership with world-leading research institutions, OEMs and Tier 1 suppliers, Shimco is developing unique and patented technologies, products and services to address the Diagnostic and Prognostic Health Monitoring market space.

## Aircraft Diagnostic and Prognostic Health Monitoring (DPHM):

The assessment of an aircraft's structural condition using advanced sensor technologies, where data can be collected, transferred and analyzed to assess aircraft integrity. This data can also be used to optimize the maintenance-repair-overhaul (MRO) cycle to significantly reduce MRO costs for the operator. Existing DPHM systems connected with wires pose many challenges.

### Benefits of Proposed Wireless DPHM:

- Discrete wireless sensors
- Significant weight reduction (no wire harnesses)
- Simplified installation
- Flexible installation locations
- Ease of access for maintenance

#### ● **Wireless sensor node**

Capturing strain/load/vibration/event, wireless data transmission

#### ○ **Data collection node**

Wireless data reception, data analysis, real-time structural health monitoring



Experience **The Perfect Fit**



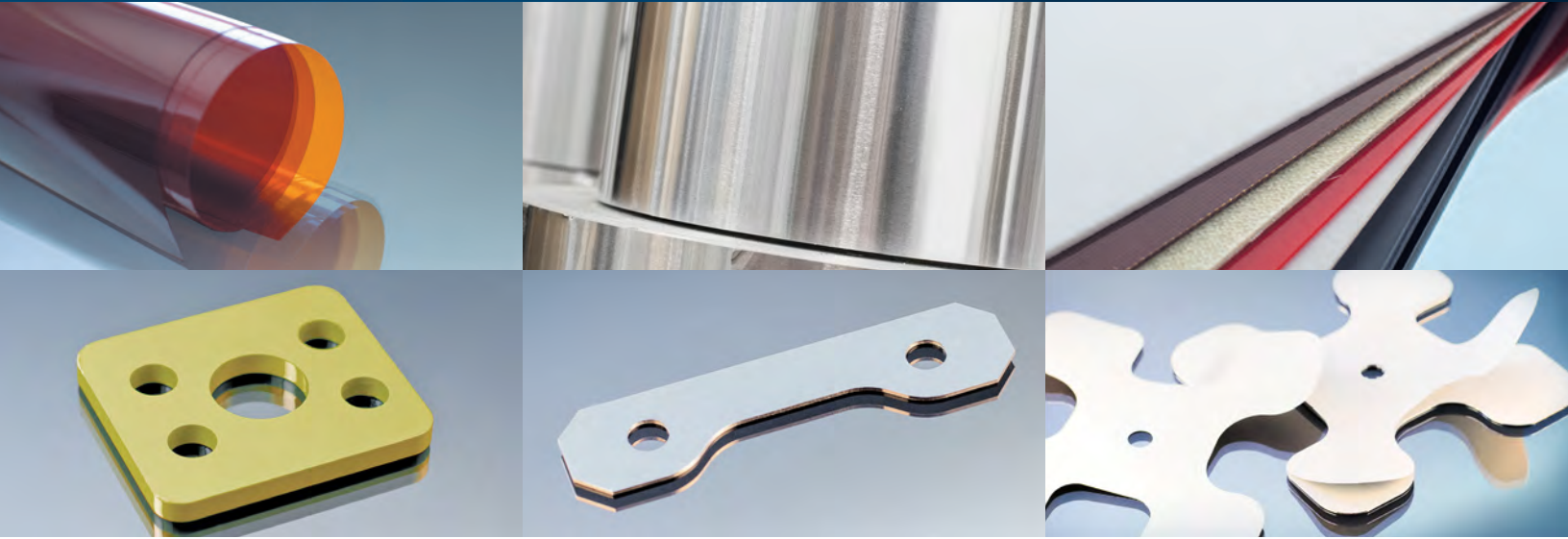
- Laminated Shims
- Edge Bonded Shims
- Tapered Shims
- Washers and Spacers
- Shim Stock
- Precision Manufactured Parts

Shimco offers a large variety of shim materials and custom machined products to a global market. Our machined shims and custom product orders are fulfilled to individual customer specifications for use in the completion of precision assemblies. Shimco uses industry and customer specific materials, such as aluminum, stainless steel, titanium and polyimides to create shim stock, high precision machined peelable shim components and solid component parts.

When you need the part for that Perfect Fit, call upon Shimco to deliver.



Experience **The Perfect Fit**



## Advanced Materials

Delrin  
Fiberglass  
Mylar  
Nylon  
Plastic  
Polyamide  
Polyimide  
Polymer  
Polytetrafluoroethylene (PTFE)

## Metals

Aluminum  
Brass  
Bronze  
Carbon Steel  
Copper  
Nickel  
Spring Steel  
Stainless Steel  
Titanium

## Finishes and Inspection Processes

Anodize  
Black Oxide  
Cadmium Plated  
Chem-Film  
Chrome  
Galvanized  
Paint  
Prime  
Powder Coated  
Tin Plated  
Zinc Plated  
Abrasive Blast  
Embrittlement Relief  
Liquid Penetrant Inspection  
Fluorescent Inspection  
Magnetic Particle Inspection  
Passivation

## Geometries

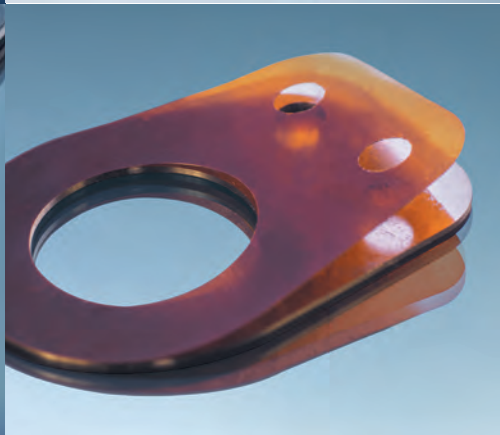
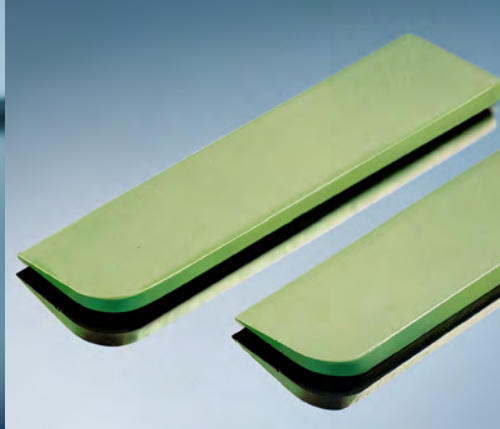
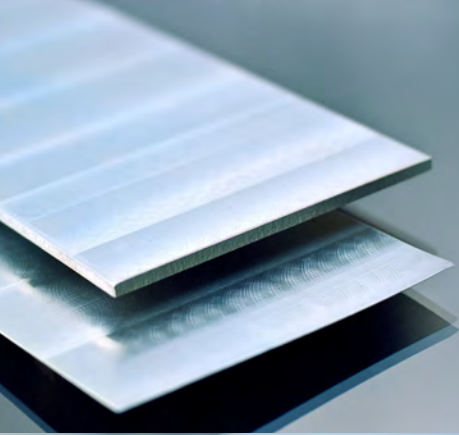
Elliptical  
Horseshoe  
Loose Leaf  
Rectangular  
Round  
Slotted  
Square  
Tapered

## Features

Adjustable  
Color Coded Plastics  
Corrosion Resistant  
Ground  
Heat Treated  
Peelable



Experience **The Perfect Fit**



From order placement, through production and processing, to final on-time delivery, Shimco provides a highly controlled process meeting the rigorous demands of the aerospace industry. Customers in all industry sectors benefit from Shimco's commitment to perfection of product and excellence in service.

Experience **"The Perfect Fit"**. Call on Shimco for your manufacturing needs.

75 Heroux Devtek Drive | Cambridge | Ontario | Canada | N3E 0A7 | Tel : +1 (905) 471-6050 | info@shimco.com

[www.shimco.com](http://www.shimco.com)

Experience **The Perfect Fit**