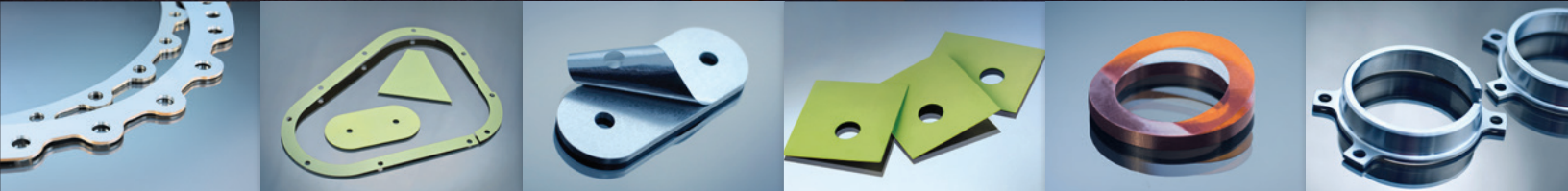




Canada's only full-service custom shim and small part manufacturer
serving the global aerospace, defense, medical and industrial supply chains.



Experience *The Perfect Fit*

At Shimco we strive for excellence by expanding our production, capabilities, streamlining processes, implementing advanced technologies and offering vertically integrated solutions to meet your needs. We continue to advance key technologies through collaboration with world-class research institutions and industrial partnerships.

OUR VISION *is to be a preferred strategic partner to global aerospace, defense, medical and industrial companies, providing value and superior service on everything we do. Our goal is to exceed our customers' expectations making them want to do business with Shimco again.*



Our Product Line:

- Laminated Shims
- Edge Bonded Shims
- Tapered Shims
- Non-Metallic Shims
- Washers and Spacers
- Solid Shims
- Machine formed
- Advanced Coating

Special Processes:

- Anodizing
- Passivation
- Chemical Conversion
- Priming/Painting
- Dyes/Colourizing
- Non-Destructive Testing
- Expedited Services

Established in 1985, Shimco is the only company of its kind in Canada and one of very few aerospace shim manufacturers in the world.

Since its inception, Shimco's product offerings have evolved to focus primarily on aerospace and defense applications. Today, Shimco manufactures several different types of customized products, including solid, laminated, edge bonded, and tapered shims, laminated sheet stock and precision machined parts.

Shimco is committed to delivering products that meet or exceed its customers' expectations by maintaining its exceptional quality and on-time delivery record, offering innovative new products, investing in leading edge manufacturing processes, implementing cost reduction initiatives and maintaining its financial strength. Our customers know that they can count on Shimco to deliver what they need today and that Shimco will be here tomorrow to do the same.

Industry Focus: Defense / Aerospace / Medical / Industrial

"Shimco is committed to innovative product developments that will benefit customers in the aerospace industry, as well as those in the defense, space and industrial markets."

Peter Voss, CEO



With our new special processes line, Shimco is now a fully vertically integrated supplier, your “ONE STOP SHOP”. Being a fully vertically integrated facility allows us to offer some of the best lead times in the industry while delivering products to customers in a production-ready state. Shimco manufactures under ISO 9001 2015:AS 9100D standards, using multi-axis CNC milling machines, CNC turning lathes, high-tolerance shears and tightly controlled manufacturing processes. Shimco also invests heavily in information technology, ensuring that critical information is captured, securely stored and used effectively in driving lean processes throughout the organization. The end result is that Shimco’s partners get the products that they want, when they want it.

Manufacturing Methods

- CNC Milling and Turning
- Forming
- General Machining
- Shearing

Sub-Contract

- Laser Cutting
- Surface Grinding
- Water Jet Cutting

Lengths

Max 42 in / 1066.8 mm

Widths

Max 20.5 in / 520.7 mm

Thicknesses

Min 0.001 in / .0254 mm

Max 20.5 in / 520.7 mm

Shimco is ISO 20015:AS9100D certified and Canadian Controlled Goods registered, we operate at a heightened level of quality control and security. Customers have the confidence that whatever products or services they obtain from Shimco will be at world-class levels and that their information will always be protected.

*Experience **The Perfect Fit***

In partnership with world-leading research institutions, OEMs and Tier 1 suppliers, Shimco is developing unique and patented technologies, products and services to address the Diagnostic and Prognostic Health Monitoring market space.

Aircraft Diagnostic and Prognostic Health Monitoring (DPHM):

The assessment of an aircraft's structural condition using advanced sensor technologies, where data can be collected, transferred and analyzed to assess aircraft integrity. This data can also be used to optimize the maintenance-repair-overhaul (MRO) cycle to significantly reduce MRO costs for the operator. Existing DPHM systems connected with wires pose many challenges.

IntelliShim[™]
Wireless Data (Out)



External Stimulus (In)

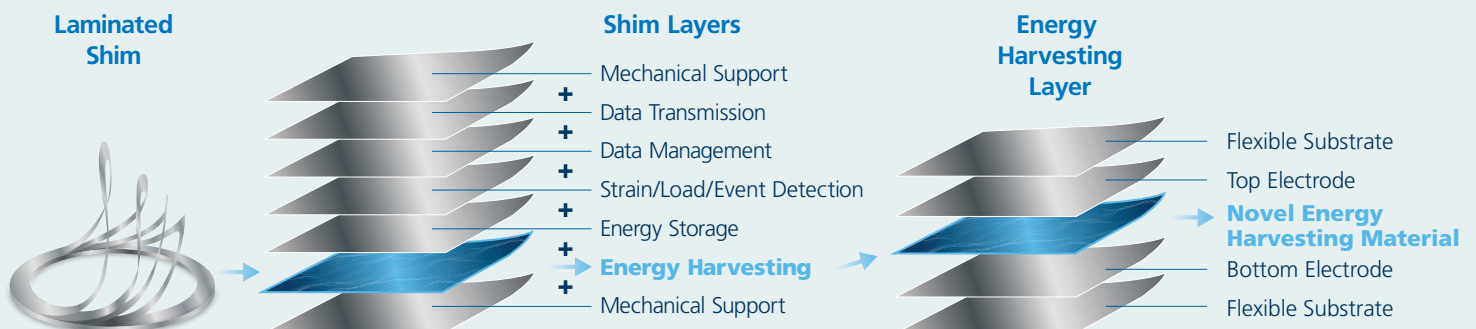
Benefits of Proposed Wireless DPHM:

- Discrete wireless sensors – no wires in, no wires out
- Significant weight reduction (no wire harnesses)
- Simplified installation
- Flexible installation locations
Installs almost anywhere, including moving and rotating parts
- **Measures what matters!**



● **Wireless sensor node**
Capturing strain/load/vibration/event, wireless data transmission

○ **Data collection node**
Wireless data reception, data analysis, real-time structural health monitoring



Expedited Special Process Services

Your order fulfilled in as little as 24 hours.

Shimco Processing is now offering expedited services for special processing. Save yourself a week (or more) of lead-time when you call or request Shimco's Expedited Service.



Shimco offers metal surface treatments, such as anodizing, passivation, chemical conversion coatings, priming, painting and rapid cure, in our new state-of-art special processes line.

Most metals require some kind of surface treatment to protect them from the environment, or harsh chemicals. Shimco is now offering metal surface treatments to protect metal surfaces. Our chemical tanks are 3'x3'x4' (0.9mx0.9mx1.2m) in size.



Anodizing



Passivation



Dyes/Colorizing



Chemical
Conversion



Priming/
Painting



Non-Destructive
Testing



Experience **The Perfect Fit**



- Laminated Shims
- Edge Bonded Shims
- Tapered Shims
- Non-Metallic
- Washers and Spacers
- Solid Shims
- Machined/Formed
- Precision Manufactured Parts
- Test Panels

Shimco offers a large variety of shim materials and custom machined products to a global market. Our machined shims and custom product orders are fulfilled to individual customer specifications for use in the completion of precision assemblies. Shimco uses industry and customer specific materials, such as aluminum, stainless steel, titanium and polyimides to create shim stock, high precision machined peelable shim components and solid component parts.

When you need the part for that Perfect Fit, call upon Shimco to deliver.



Experience **The Perfect Fit**



Advanced Materials

Delrin
Fiberglass
Mylar
Nylon
Plastic
Polyamide
Polyimide
Polymer
Polytetrafluoroethylene (PTFE)

Metals

Aluminum
Brass
Bronze
Carbon Steel
Copper
Nickel
Spring Steel
Stainless Steel
Titanium

Finishes and Inspection Processes

Anodize
Black Oxide
Cadmium Plated
Chem-Film
Chrome
Galvanized
Paint
Prime
Powder Coated
Tin Plated
Zinc Plated
Abrasive Blast
Embrittlement Relief
Liquid Penetrant Inspection
Fluorescent Inspection
Magnetic Particle Inspection
Passivation

Geometries

Elliptical
Horseshoe
Loose Leaf
Rectangular
Round
Slotted
Square
Tapered

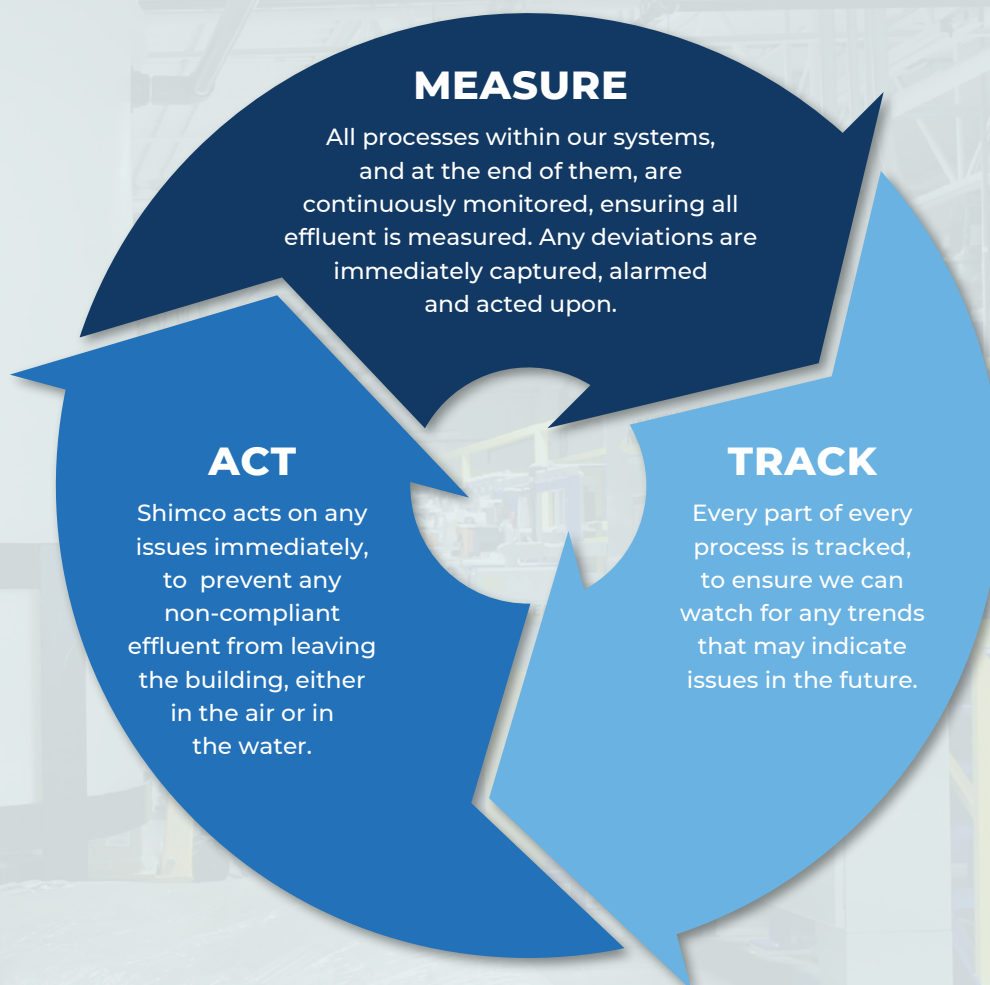
Features

Adjustable
Color Coded Plastics
Corrosion Resistant
Ground
Heat Treated
Peelable

Experience **The Perfect Fit**



At Shimco, we take our impact on the environment seriously. Our new special processes line has world-class cleaning technologies, ensuring that we emit as little as technologically possible to the environment.



Experience *The Perfect Fit*



From order placement, through production and processing, to final on-time delivery, Shimco provides a highly controlled process meeting the rigorous demands of the aerospace industry. Customers in all industry sectors benefit from Shimco's commitment to perfection of product and excellence in service.

Experience **"The Perfect Fit"**.
Call on Shimco for your manufacturing needs.

75 Heroux Devtek Drive | Cambridge | Ontario | Canada | N3E 0A7 | Tel : +1 (905) 471-6050 | info@shimco.com

www.shimco.com

Experience ***The Perfect Fit***